

Elastomeric Panel Isolators

Application and Selection Guide



- Exceptional Noise Performance
- Broad Load Range
- Fail Safe Design
- Meets all Aircraft Flammability and Toxicity Requirements



Elastomeric Panel Isolators

Product Overview

The desire to control aircraft interior noise for enhanced passenger/crew comfort has presented significant challenges for aircraft designers. Industry standard mounts often fail to take advantage of improved features and materials to optimize noise attenuation. Noise testing based on the 4-Pole Test method demonstrates that significant gains in noise isolation are available without sacrificing size, weight or load capacity.

Product Solution

Enidine Incorporated now offers a line of isolators to provide optimized noise/vibration attenuation for a variety of aircraft interior applications. These isolators provide significantly better noise attenuation compared to industry "standard" mounts.

Designed to accommodate a range of mounting configurations and load conditions, Enidine Panel Isolators can be used for sidewall and ceiling panels, as well as for mounting IFE and other equipment.

Typical Applications

- Sidewall Panels
- Dado Panels
- Ceiling Panels
- Interior Trim / Door Panels

Features and Benefits

- Exceptional Noise Performance
- Fail Safe Low-Profile Design
- Improved Composite Frame Noise Attenuation Applications
- Interchangeable with Existing Isolator Sizes
- Multiple Elastomer Stiffnesses Available in the Same Envelope Size



ENIDINE

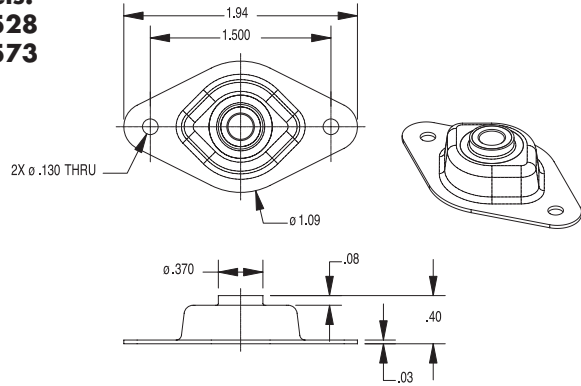
An IMC Company

Elastomeric Panel Isolators

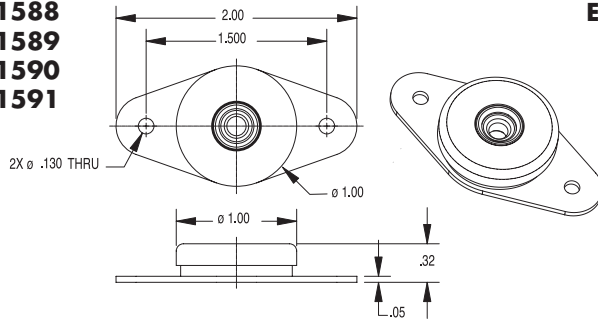
Technical Data

Part Number	Thru Hole	Rated Load (lbs.)	Ultimate Load (lbs.)
EI11588	#10-32 UNJF-3B Self Locking	25	800
EI11589	#10-32 UNJF-3B Self Locking	75	800
EI11590	#10-32 UNJF-3B Self Locking	150	800
EI11591	.290 Thru	150	800
EI11528	.290 Thru	9	200
EI11573	.190-32 UNJF-2B Self Locking	9	200
EI11579	#10-32 UNJF-38	3	50

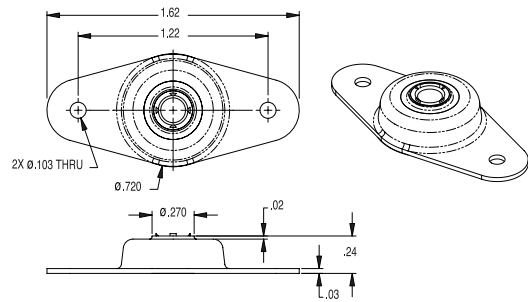
Models:
EI11528
EI11573



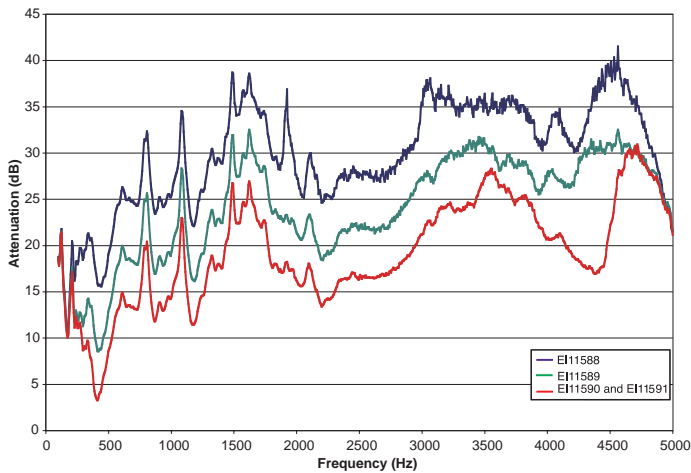
Models:
EI11588
EI11589
EI11590
EI11591



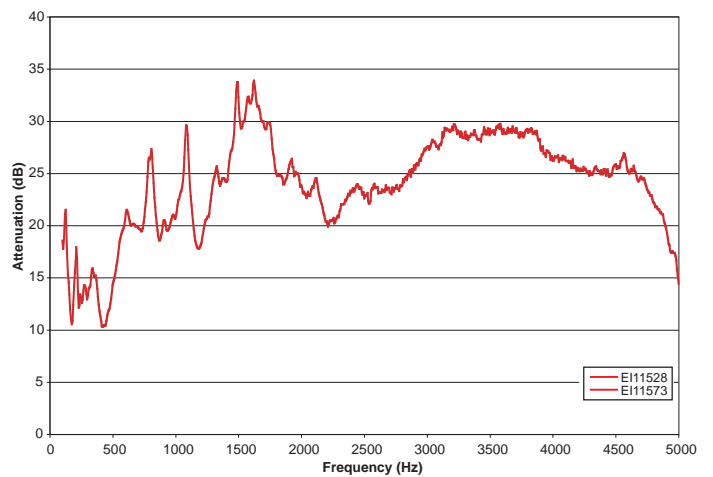
Model:
EI11579



Attenuation Per 4 Pole Test Method

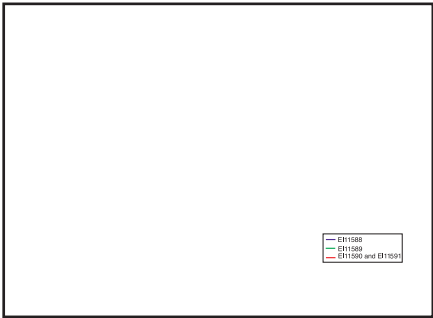


Attenuation Per 4 Pole Test Method



ENIDINE

An IMC Company



¥ Integrated PDM System
¥ AS-9100
¥ ISO-9001